

A-PULSE

HEART RATE WRISTBAND

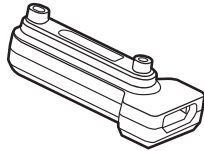
Quick Start Guide

This Heart Rate Sensor is equipped with ANT+ and Bluetooth Smart (4.0) protocols, which enables to connect with display of AROFLY APP on Smart Phone or A-PLUS Meter (GPS Cycle Computer) or other display devices which uses the same protocols.

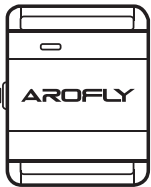
Package Contain



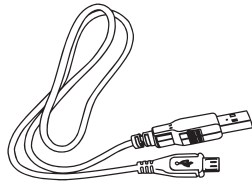
Fabric wrist band



Charging adapter



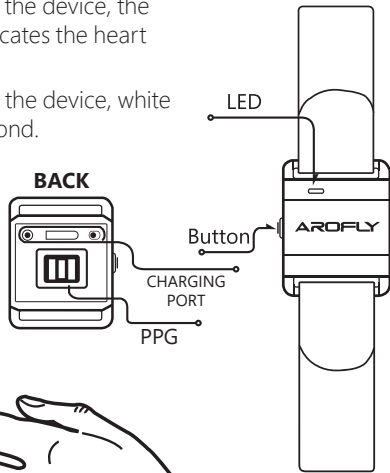
Heart rate sensor



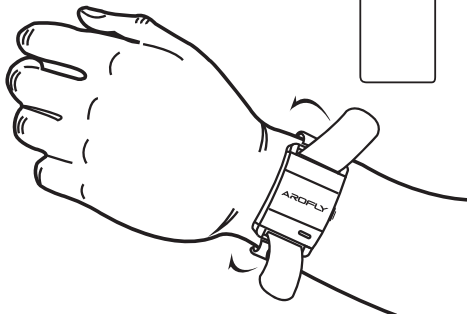
Micro USB cable

Operation

1. Press the button to turn on the device, the LED light flashes green indicates the heart rate sensor is ON.
2. Press the button to turn off the device, white LED light will flash for 1 second.
3. Red light indicates the battery power is low.
4. Please allow 5-10 seconds for the sensor to calibrate after wearing and turning on the device.



5. Wear the heart rate sensor on the upper or lower portion of the wrist. Sensor should be on the inside or on top of wrist. It should be tighten not to move.



LED Indication

Green light flashes: Device is on and ready to connect with BLE/ANT+ receiver

Red light flashes: Battery power is low

Blue light flashes: Device successfully connect with BLE/ANT+ receiver

White light flashes: When the device is being turned off

Connect with AROFLY APP

1. Open AROFLY APP on Smart Phone and Bluetooth must be turned on.
2. After AROFLY Sensor is connected with APP, you can go connecting this A-PULSE Heart Rate Sensor with APP.
3. Press the button of A-PULSE Heart Rate Sensor to switch on.
4. AROFLY APP is automatically searching this Heart Rate sensor to get connection.



When Heart Rate indicator illuminates, connection is successful.

Heart Rate indicator illuminates to RED, connection is successful.

Connect with A-PLUS Meter (GPS Cycle Computer)

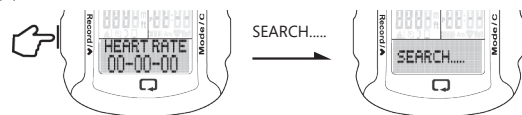
1. Turn on A-PLUS Meter.
Press SET key for 3 seconds to enter "SET MODE"
Press **Mode/C** to SET SENSOR and press **↩** to Set Heart Rate Sensor.
Then press **Record/▲** to SEARCH heart rate sensor. See below.
2. In the meantime, press the button of A-PULSE Heart Rate Sensor to switch on.
A-PLUS Meter is automatically searching for connection.

Operation on A-PLUS Meter

Go to SET SENSOR.

Press **↩** to Set Heart Rate Sensor.

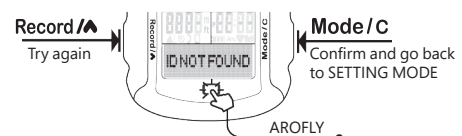
HEART RATE ID 00-00-00, press **Record/▲** SEARCH... appears.



If the device detects new sensor, the screen will show: SENSOR LINK follows by 6 digit ID.

If the device fails to receive new sensor, the screen will show: ID NOT FOUND.

Press **Record/▲** to try again, press **↩** to go to Heart Rate pairing, or press **Mode/C** to confirm and go back to SETTING MODE.



Attention:

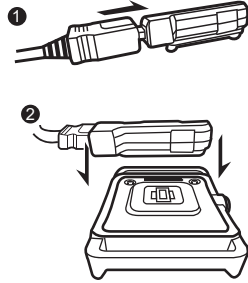
1. This Heart Rate Sensor can be used either by Smart Phone of AROFLY APP or A-PLUS Meter, but cannot be used with 2 display devices (Smart Phone and A-PLUS Meter) simultaneously.
2. This Heart Rate Sensor can also be used with other display devices which uses the same protocols via Bluetooth or ANT+.

A-PULSE

HEART RATE WRISTBAND

Recharge

1. Connect micro USB cable with the charging adapter.
2. Attach the charging adapter to the sensor, the cable should be on the opposite side of the button. Please make sure the pins are touching, if the pins are not connected, please switch position and try again. Do not attach the charging adapter to the sensor by force, it may damage the sensor.
3. When the sensor is charging, a red light will be on.
4. Charge the heart rate sensor for 2 hours or until the red light is off.



Specification

Frequency	BLE4.0, ANT+
LED Indicator	Blue, Green, Red and White
Working Hours	13 hours
Charging Time	2 hours
Device Weight	9.6 g
Sensor Dimension	30.2mm x 37.9mm
Wrist Band Dimension	265mm x 25mm
Waterproof	IPX6
Transmission Distance	100 inch
Working Temperature	0 °C to + 50 °C
Storage Temperature	-10 °C to + 60 °C
Battery Type	Lithium Polymer Battery
Accuracy	within +/-2 accuracy compare with ECG chest belt

Care and Maintenance Instruction

1. Keep the sensor away from high voltage locations. Please separate the strap and heart rate sensor if cleaning is need.
2. The strap should be rinsed under running water or washed in the washing machine within a laundry pouch.
3. Use dry and soft towel to clean the PPG area.
4. When low battery please charge the device, it will result inaccurate measurement.

Warranty

1. A-PULSE comes with a 12 month warranty against manufacturer's defects, or failure to work within the 12 months, from date of original purchase. Warranty cannot be transferred.
2. Warranty does not cover failure from neglect, accidental damage due to dropping, crushing, misuse, and failure to follow instruction manual.
3. If the A-PULSE is opened without the manufacturer's assistance or any tampering with the electronic components, will COMPLETELY VOID the WARRANTY.



Design & Manufacture by
TBS Group Corporation

www.arofly.com

Made in Taiwan